



Master-Pin-Control

34x Pins

Pin System for Membrane Fixation | developed with Dr. Istvan Urban

Master-Pin-Control is designed especially for the fixation of resorbable, non-resorbable and titanium reinforced membranes. Since the pins have an extra mini-thread, they are a hybrid between a screw and a pin. The thread increases the surface of the pins and thus offers much more stability. In addition, due to the thread and a unique head-design, the pins can be removed easily and safely which is especially important after a successful healing period. With their sharp tip and very stable shank, they can be inserted easily and precisely into dense cortical bone.



Art.-No. BMP00

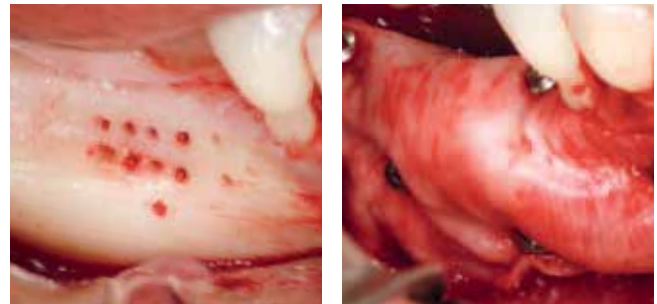


Master-Pin-Control Basic



Also available with 10 pins.

10x Pins


Art.-No. BMPBA



© Dr. Istvan Urban

	Initial burs (2 Stck. / 2 pcs.)	Twist drills (je 2 Stck. / each 2 pcs.)		Pins (34 Stck. / 34 pcs.)
Fig.	186RF	203RF	203RF	MP10*
Shank ¹	204	205	205	-
Size ²	018	006	008	-
Length mm	12.0	7.0	7.0	3.65
	-	-	-	0.87
	1.8	0.6	0.8	0.95

¹ 204=RA, 205=RA L ² Largest working part diameter in 1/10 mm

 Minimal diameter

 External diameter

*  With the reuse of disposable products, the risk of infection cannot be excluded and a risk-free functional safety cannot be guaranteed.

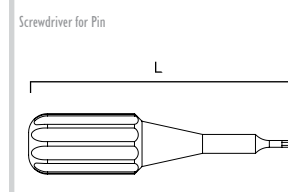


Fig. MP11
illustrated 1:1 (Lenght mm: 35.0)

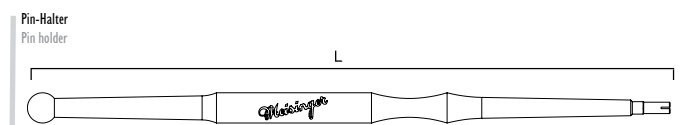
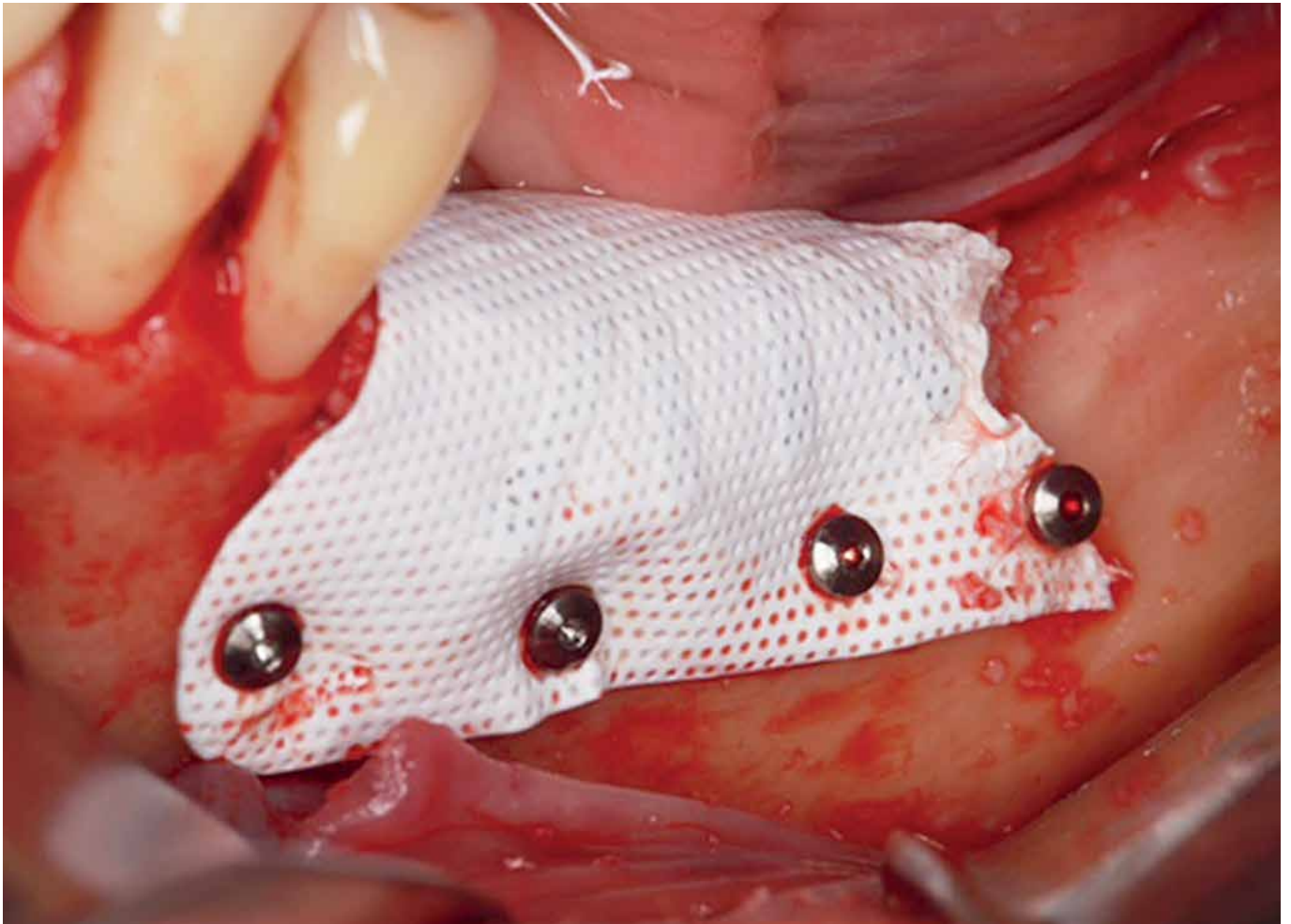


Fig. MP12
illustrated 1:2 (Lenght mm: 170.0)



Fig. MP14
illustrated 1:2 (Lenght mm: 165.0)



Optionally available:

Twist Drill with Stop

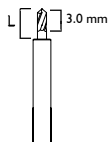


Fig.	203S
Shank ¹	204
Size ²	012
Length mm	4.0
	-
	1.2

¹ 204=RA ² Largest working part diameter in 1/10 mm

* With the reuse of disposable products, the risk of infection cannot be excluded and a risk-free functional safety cannot be guaranteed.

Screwdriver for Pin

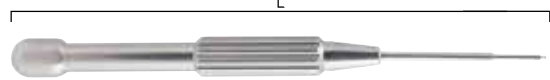


Fig.	MP15
illustrated 1:2 (Length mm: 148.0)	

